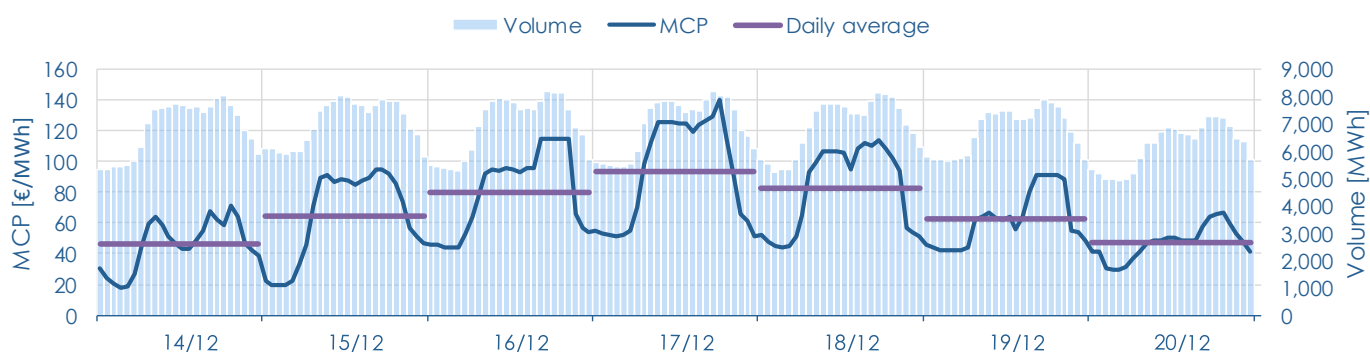
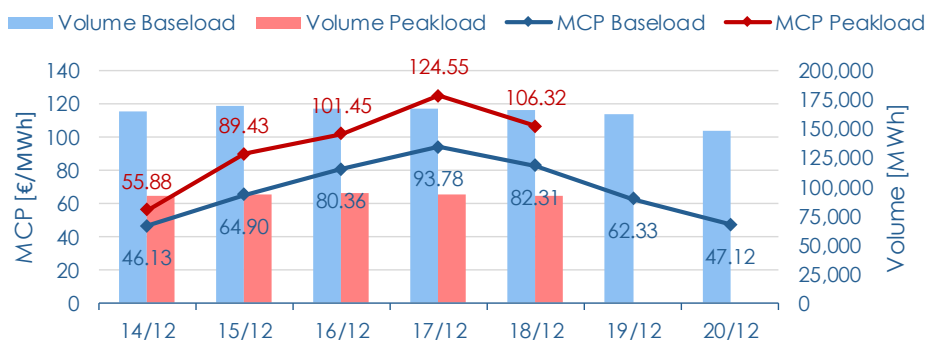


Hourly MCP & Volume



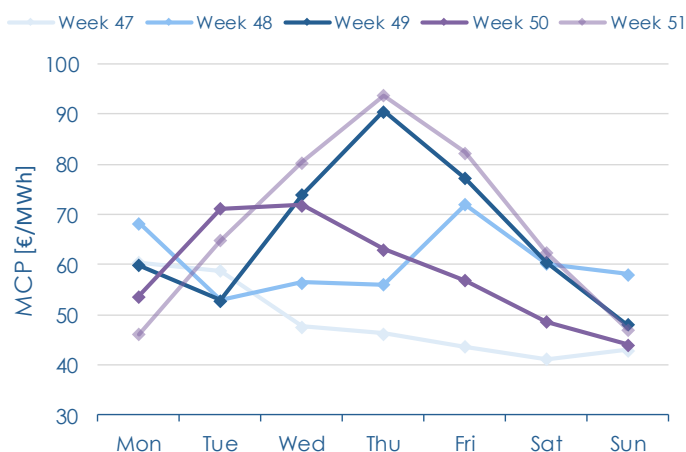
Daily MCP & Volume



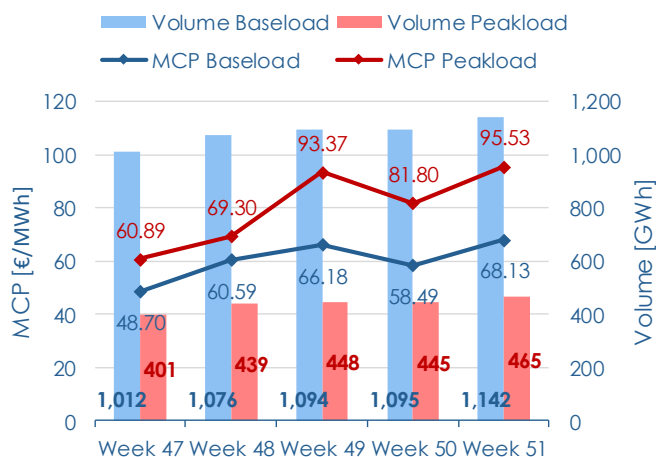
Data table

Delivery Day	MCP [€/MWh]		Volume [MWh]	
	BL	PL	BL	PL
14/12	46.13	55.88	164,486	92,141
15/12	64.90	89.43	169,053	93,181
16/12	80.36	101.45	166,243	93,958
17/12	93.78	124.55	166,384	93,265
18/12	82.31	106.32	165,769	92,437
19/12	62.33	-	162,034	-
20/12	47.12	-	148,165	-

MCP per Weekday



Weekly MCP & Volume

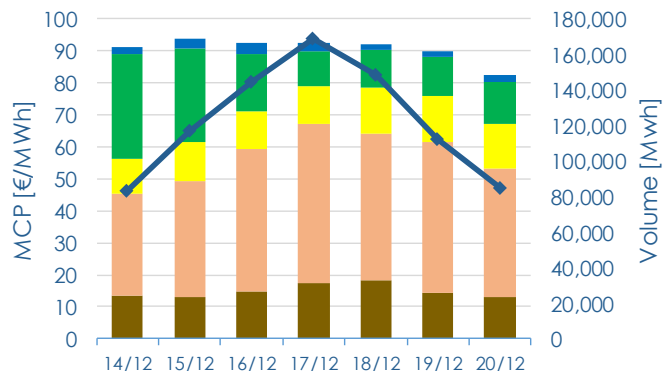


Day Ahead Electricity Market – Greek Bidding Zone

Week 51 [Mon 14/12/2020 - Sun 20/12/2020]

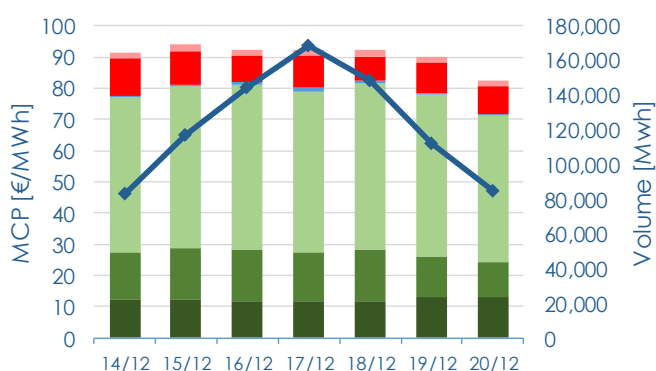
Daily Supply mix

Lignite Gas Imports RES Hydro MCP



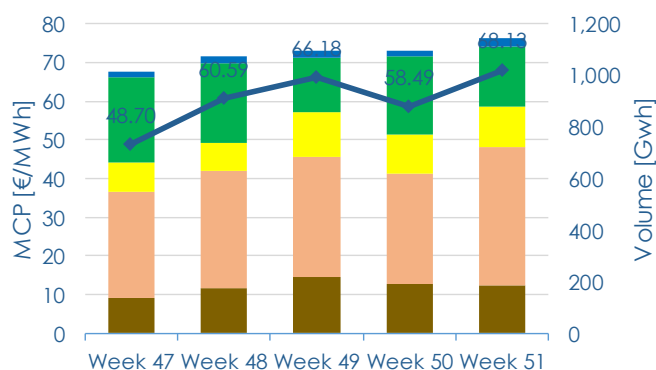
Daily Demand mix

HV Load MV Load LV Load Pumping Exports Losses MCP



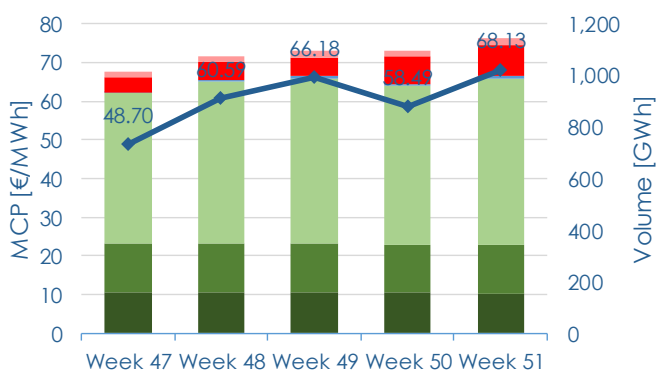
Weekly Supply mix

Lignite Gas Imports RES Hydro MCP



Weekly Demand mix

HV Load MV Load LV Load Pumping Exports Losses MCP

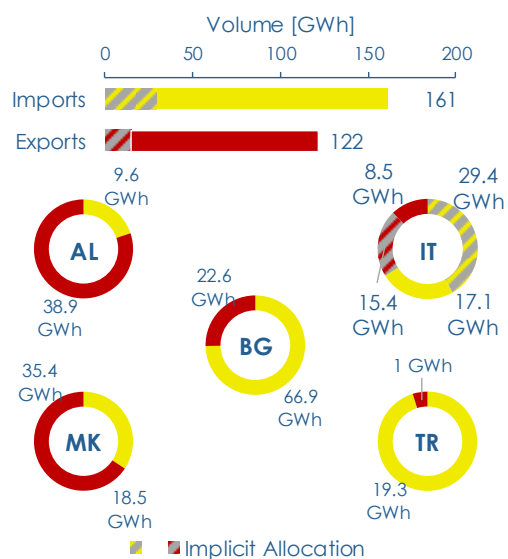


Unmatched orders & traded volume

FWD market OTC market DAM (direct) Unmatched Orders* Demand/Supply MCP

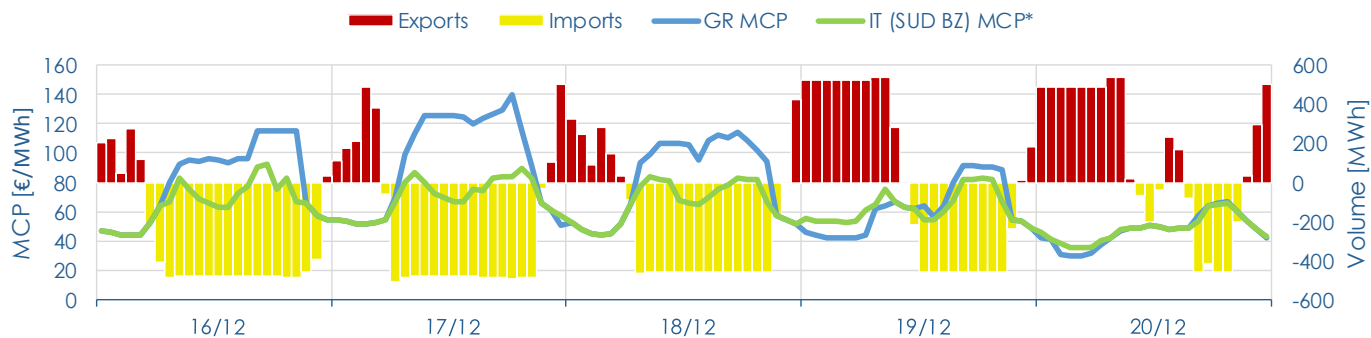


Cross Border Volumes



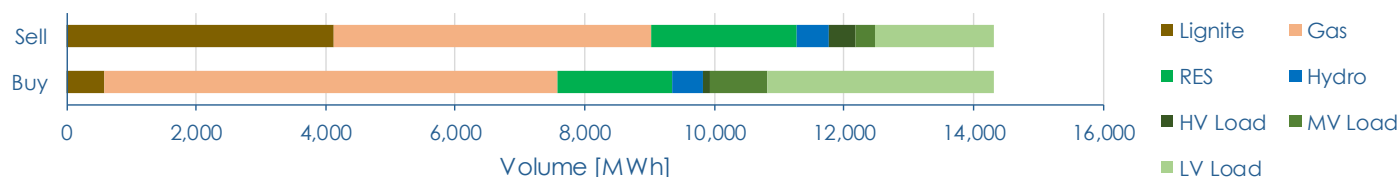
*The unmatched orders include all orders that have not been included in the algorithm (excluding block orders for sell side)

Market Coupling Cross Border Flow

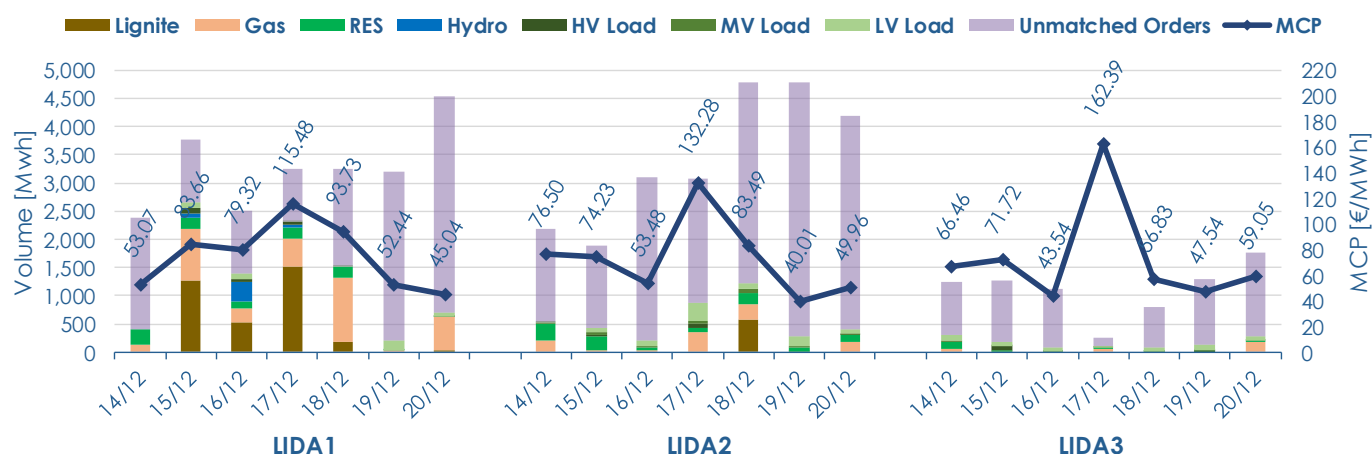


*Data source for IT (SUD BZ) MCP: <http://www.mercatoelettrico.org/En/Esiti/MGP/EsitiMGP.aspx>

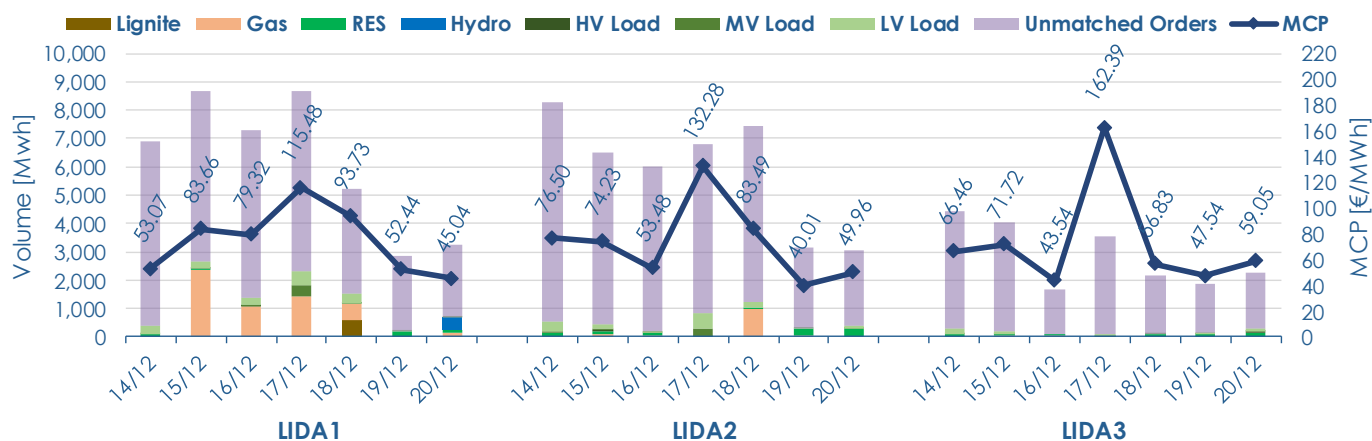
Aggregated traded volume



MCP, Volume & unmatched orders for Sell Side



MCP, Volume & unmatched orders for Buy Side



MCP per weekday

